

BECOME A CHARTERED MANAGER

TAKE YOUR CAREER TO NEW HEIGHTS



THE CHARTERED DIFFERENCE

Chartered Manager (CMgr) is the highest status that can be achieved as a manager and leader. The CMgr professional designation is the globally recognised gold-standard marque of management and leadership excellence.

Through a strategic partnership with the Chartered Management Institute (CMI), the Institute of Managers and Leaders now offers the prestigious Chartered Manager designation exclusively in Australia and New Zealand. Become a leader recognised for management excellence and add value to your organisation by professionalising your leadership skills. Focused on Continuing Professional Development (CPD), the designation differentiates you from other managers, increasing your employability. Become accredited with the internationally recognised gold standard of leadership, and join an exclusive worldwide network of top leaders as a Chartered Manager.

ABOUT THE INSTITUTE OF MANAGERS AND LEADERS (IML)

The Institute of Managers and Leaders (formerly the Australian Institute of Management Membership) is a non-profit Membership organisation and the gold standard-setting professional body for management and leadership excellence. For more than 75 years, we have been supporting professionals on their leadership journey in keeping with our vision – creating better managers and leaders, for a better society.

96%

of Chartered Managers use their designation as **proof of experience in leading people and managing change**.*

A DIFFERENT CPD EXPERIENCE

Excellent management and leadership skills aren't gained by counting hours and points. The commitment to Continuing Professional Development (CPD) that Chartered Managers make is based on an evaluative process that considers key learning experiences, and their impact on the workplace.

The IML Member Portal allows Chartered Managers to keep a record of their Continuing Professional Development.

Our Chartered Managers are encouraged to focus on four key areas when looking at their CPD:

1.

REFLECTION

What are my needs and objectives?

2.

PLANNING

What am I going to do?
When am I going to complete or review this?

3.

ACTION

What have I done?
What/When/Where?

4.

EVALUATION

What have I learnt?
Has this met my needs and objectives?

* Statistics are based on Mapping Management Excellence report (2015) conducted by the Chartered Management Institute.

managersandleaders.com.au

SHAPE YOUR FUTURE

ASSESSMENT STRUCTURE

<p>SUPPORTING DOCUMENTS</p>  <p>Provide evidence to support your eligibility</p>	<p>WRITTEN ASSESSMENT</p>  <p>Undertake an assessment reviewing your practical skills</p>	<p>PHONE INTERVIEW</p>  <p>Undertake an interview with an assessor</p>	<p>IML MEMBERSHIP</p>  <p>Become a Member of IML and CMI</p>
--	---	---	--

ASSESSMENT FEE STRUCTURE

There are two routes to become a Chartered Manager:

<p>QUALIFIED ROUTE</p> <p>This route is a direct path to becoming a Chartered Manager.</p> <p>.....</p> <p>PREREQUISITES</p> <p>Minimum bachelor level qualification in management, leadership or business.</p> <p>And at least three years' management or leadership experience.</p> <p>\$605</p>	<p>EXPERIENTIAL ROUTE</p> <p>This route to Chartered Manager provides you with a Certificate in Management and Leadership. There are two ways of undertaking this route – online or through assessor-led reflection.</p> <p>.....</p> <p>PREREQUISITES</p> <p>At least five years' management or leadership experience.</p> <p>Practical Online Coursework \$1,595 OR Reflective-Based Assessment \$2,500</p>
---	--

ANNUAL MEMBERSHIP FEE STRUCTURE

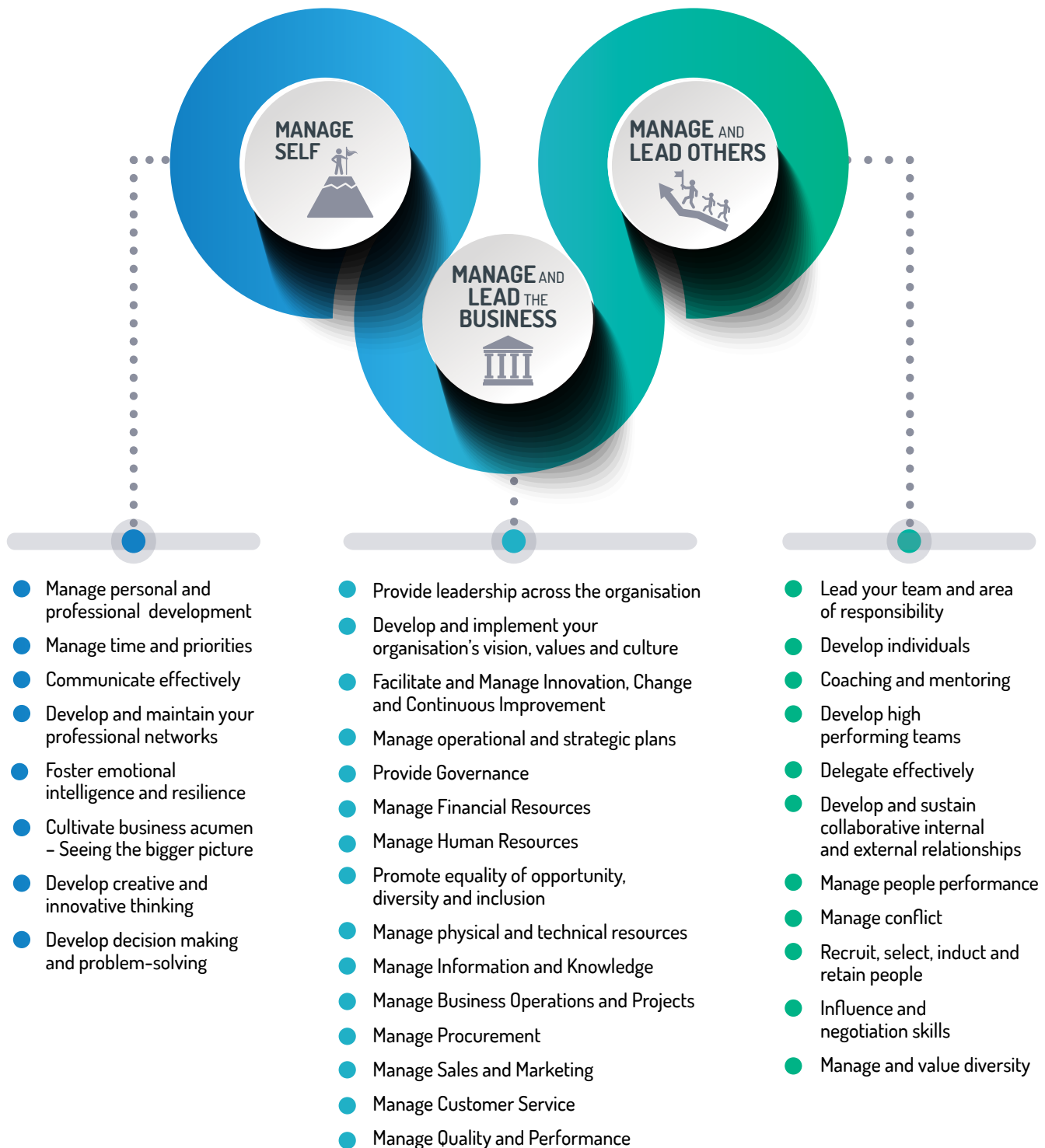
As a Chartered Manager, you must hold Membership with the Institute of Managers and Leaders. Your Membership level – Member, Associate Fellow or Fellow – is determined based on your management experience. You will also become a Member of the Chartered Management Institute.

IML Membership Application fee	\$90
Chartered Member (CM _{gr} MIML)	\$350 per year
Chartered Associate Fellow (CM _{gr} AFIML)	\$400 per year
Chartered Fellow (CM _{gr} FIML)	\$455 per year
CMI Member (CMCI)	Included in Chartered Membership fee

IML MANAGEMENT COMPETENCY FRAMEWORK

34 CORE COMPETENCIES

Our Chartered Manager professional development structure is underpinned by the IML Management Competency Framework. This revolves around 34 key competencies for successful management and leadership practice.



BE MORE THAN A MANAGER

4 PILLARS OF CHARTERED MANAGER



TESTIMONIALS

“Becoming a Chartered Manager involves rigour and consistency in the pursuit of professionalism as a manager and leader. As a proud manager and leader for many decades, I have learnt that professionalism and reputation is important to maintain, and taking the step to be a Chartered Manager shows my commitment to consistent high standards working with others. Having a framework for professionalism as a manager and leader is incredibly grounding. By adhering to the highest code of ethics and standards in managing yourself, others and the business, everyone benefits.”

Ian Coombe, CMgr FIML
President, Kidsafe QLD

“The most important aspect of being a Chartered Manager is that it is an accredited standing that facilitates a growth mindset in leadership development. Given the dynamic pace of change and business environments, it is important to ensure that we engage with frameworks such as Chartered Manager, to provide a platform for professional standing, growth and continual development. Having a code of ethics is also important. I work in Human Resources, and fully appreciate the importance of culture, values and leadership brand to an organisation. An agreed ethical code underpins decision making, actions and ensures authentic and credible leadership for organisations and stakeholders.”

Jayne Gillespie, CMgr AFIML
Head of People and Culture, Flinders Christian Community College

95%
of Chartered Managers agree that Chartered status shows their integrity and commitment to ethical behaviour.*



THE GLOBAL GOLD STANDARD FOR MANAGERS AND LEADERS

BECOME A CHARTERED MANAGER TODAY

Call **1300 661 061** or email chartered.manager@managersandleaders.com.au
For more information visit managersandleaders.com.au/Chartered-Manager

